

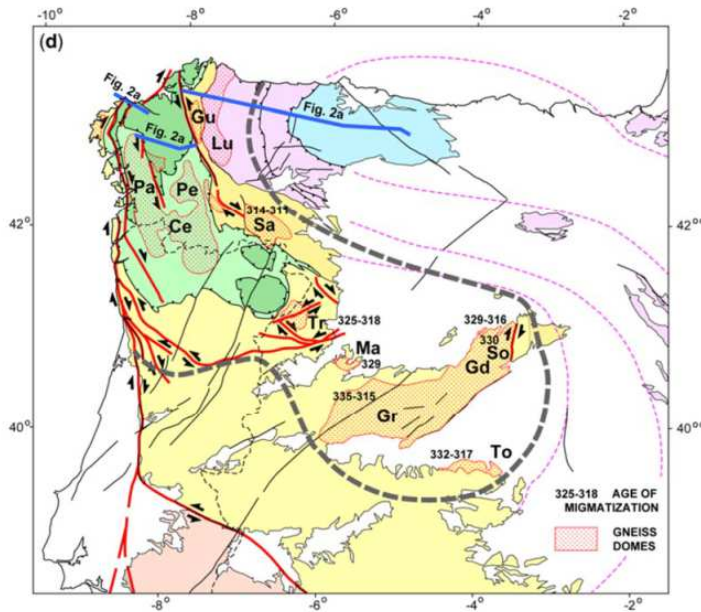
NEWSLETTER

Nº 11

March 2020



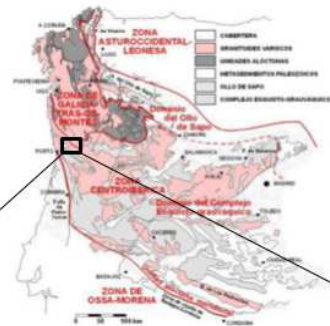
Until now...



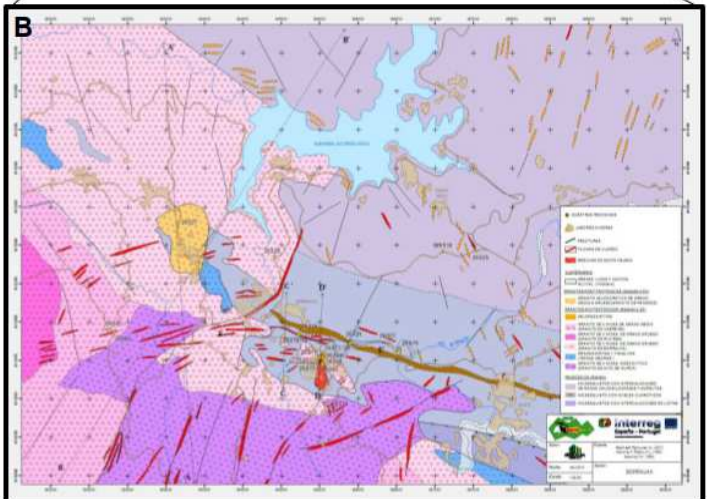
During the year 2020, within the framework of the POCTEP-ESMIMET Project, the geological synthesis was carried out and its subsequent digitization in GIS. The metallogenetic map will be executed at the end of the project and will integrate the general information collected throughout its execution and thus it will be able to have a final view of the results obtained.

In this first quarter of 2020, the FCUP researcher Luis Lima has carried out a stay at CARTIF whose objective has been to complete the work carried out by the CARTIF researchers Pedro Acebes and Jorge Calvo at the FCUP facilities, corresponding to the study of volumetry of the hole of the exploitation of the Santa Helena Breccia (wolframite and quartz) within the Borralha mining domain, in addition to determining the geographical location of the waste deposits resulting from said exploitation. To carry out the work, the proposal has taken into account sustainable exploitation according to the definition of the block to be exploited and its volume estimation, definition of the most appropriate mode of operation and definition of an area for the safe location of future dumps resulting from the exploitation and processing of minerals.

A



B



Coming soon...

Finally, in this first quarter of 2020 and due to the current health situation, the ESMIMET project partners are working on the development of the following deliverables:

- 1) Proposals for efficient and sustainable processing in metal mining (case studies).
- 2) Guide to the best "Available Techniques" in the field of metal mining.
- 3) Feasibility report on the inclusion of renewable energy sources in the daily operation of metal mines in the target regions.

In 2020, the planned technical and dissemination tasks, as well as project management meetings, will continue.