



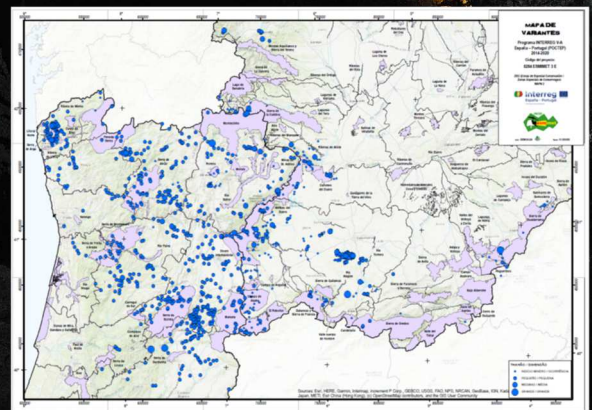
Newsletter

Nº 13

September 2020

Until now...

The variants map has been made by SIEMCALSA, it is about visualizing, through spatial cartographic information systems, the interaction that occurs between a certain target of interest, a trace or mine of W-Sn (and its metals associates) in our case, and the possible circumstances that may affect its development (urban, environmental, social, risk limitations)



During these months, the DGEM has prepared the report on the feasibility of renewable energy sources in the daily operations of the metal mines of the target regions, which includes the evaluation of global energy demand and the photovoltaic and wind potential in the area of work

With the collaboration of all the partners, the deliverable "FINAL PROJECT / END OF MASTER PROJECT MEMORIES" has been produced. Its main objective is to train a new generation of engineers and metallurgists, helping to expand the future potential of regional innovation

On the part of SIEMCALSA, the mining potential has been realized, where it will be approached from two related aspects: on the one hand, the historical production data and, on the other, the estimation of the geological-mining resources that these regions still treasure.



On 29th September, a Project meeting was held via Skype on the management of the Project, the tasks carried out and those that remain to be carried out

Yacimiento	Período	Años	WO ₃ (t)	Sn metal (t)	Fuente datos
Barruecopardo	2019-		72,708.40		Saloro, 2012
Bejanca	2017-		2.45	12.80	Blackheath Resour.+Mineralia, 2016
Borralha	2018-		4,710.00		Blackheath, 2017
Covas	2016-		12,278.70		Blackheath Resour.+Maepa, 2015
Enaras	2020-			8,652.00	SIEMCALSA, 2020g
Golpejas	1986-			296.25	SIEMCALSA, 2020f
La Fregeneda	1981-			1,767.92	Miduesa-Almagrera, 1977
Los Santos	2019-		8,348.90		Wheeler, 2015
Morille-Mart.	2015-		2,803.39		SIEMCALSA, 2015
Otero	2019-		6,952.73	13,132.94	SIEMCALSA, 2019
Panasqueira	2018-		34,644.00	3,038.00	Wheeler, 2016
Peña do Seo	2020-		2,713.50	533.25	SIEMCALSA, 2020a
Valderodrigo	2020-		5,743.78		SIEMCALSA, 2020b
Vale das Gatas	2020-		516.00	142.20	SIEMCALSA, 2020d
Valtreixal	2020-		21,960.00	20,130.00	SIEMCALSA, 2020k
TOTAL			173,381.84	47,705.36	

Coming Soon...

During the last quarter of 2020, the planned technical and dissemination tasks will continue, as well as face-to-face management meetings or via skype